



## Granite House

- 01 Buchanan Street Underground
- 02 Queen Street Rail Station
- 03 Princes Square
- 04 Central Rail Station
- 05 St Enoch Underground
- 06 St Enoch Shopping Centre
- 07 Argyle Street Rail Station
- 08 Marks & Spencer



# granite house

Stockwell Street, Glasgow


### Terms:

The accommodation at Granite House is available on the basis of new Full Repairing and Insuring Leases for an agreed term.

### VAT:

All rents are quoted exclusive of VAT

For further information, please contact:

  
**Elandome**  
 Limited  
 0141 552 4999

**Lambert Smith Hampton**  
 0141 226 6777  
 www.lsh.co.uk

**Knight Frank**  
 0141 221 9191  
 www.knightfrank.com

[www.granitehouseglasgow.com](http://www.granitehouseglasgow.com)

### PROPERTY MISDESCRIPTIONS ACT 1991

The information contained within these particulars has been checked and where appropriate stated. It is admitted to be materially correct at the date of publication. After these details have been printed, circumstances may change without our control. Where we are advised of any change we will advise all enquirers at the earliest opportunity.

PUBLICATION DATE: November 2017



Indicative office finish

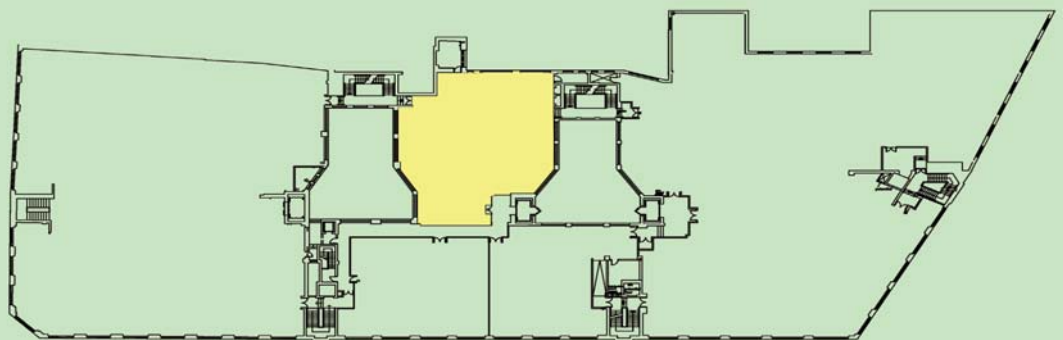
**Description:**

The available accommodation is located on the first floor within the Stockwell Street elevation of the building and is accessed via the main Granite House entrance on Stockwell Street. Lift and stair access is available from the unique reception area.

Following completion of refurbishment works, the accommodation will provide a modern open plan office suite which will be finished to a high standard.

**Specification:**

- Raised access floors
- New carpets throughout
- Gas fired central heating system
- Suspended ceilings incorporating recessed light fittings
- New double glazed window units
- Private Male, Female and disabled toilets facilities
- Tea prep facility



**Accommodation :**

The suite extends to a total Net Internal floor area of approximately 292 sq m (3140 sq ft). Please note, the floor area will require to be re-measured on completion of the refurbishment works.