



## Granite House

- 01 Buchanan Street Underground
- 02 Queen Street Rail Station
- 03 Princes Square
- 04 Central Rail Station
- 05 St Enoch Underground
- 06 St Enoch Shopping Centre
- 07 Argyle Street Rail Station
- 08 Marks & Spencer



# granite house

Trongate, Glasgow

### Terms:

The accommodation at Granite House is available on the basis of new Full Repairing and Insuring Leases for an agreed term.

### VAT:

All rents are quoted exclusive of VAT

For further information, please contact:

e  
Elandome  
Limited  
0141 552 4999

**Lambert Smith  
Hampton**  
**0141 226 6777**  
[www.lsh.co.uk](http://www.lsh.co.uk)

[www.granitehouseglasgow.com](http://www.granitehouseglasgow.com)

PROPERTY MISDESCRIPTIONS ACT 1991

The information contained within these particulars has been checked and unless otherwise stated, it is understood to be materially correct at the date of publication. After these details have been printed, circumstances may change outwith our control. When we are advised of any change we will inform all enquirers at the earliest opportunity

PUBLICATION DATE: July 2008



Indicative office finish

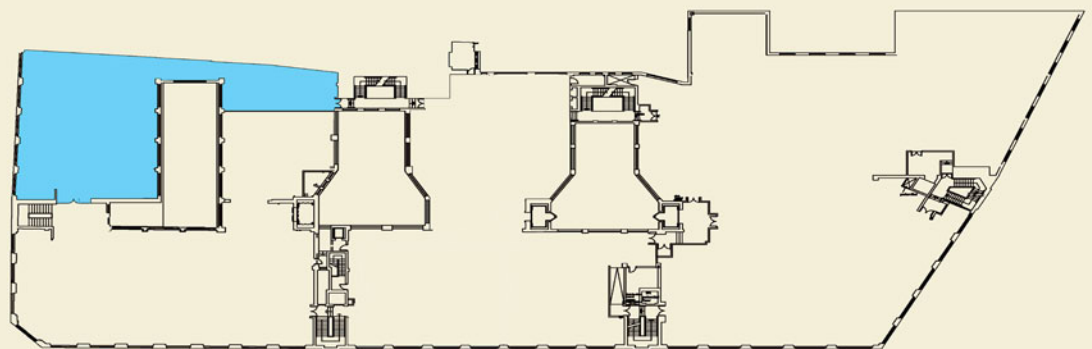
**Description:**

The available accommodation is located on the first floor of the building and is accessed via the Granite House entrance on Trongate. Lift and stair access is available.

The accommodation provides a modern open plan office suite finished to a high standard.

**Specification Includes:**

- Raised access floors
- Suspended ceilings incorporating recessed light fittings
- New carpets throughout
- New double glazed window units
- Gas fired central heating system
- Tea preparation facility
- Private Male, Female and Disabled toilet facilities



**Accommodation :**

The suite extends to a Net Internal floor area of approximately 355.37 sq m (3,825 sq ft).