 Granite House

- 01 Buchanan Street Underground
- 02 Queen Street Rail Station
- 03 Princes Square
- 04 Central Rail Station
- 05 St Enoch Underground
- 06 St Enoch Shopping Centre
- 07 Argyle Street Rail Station
- 08 Marks & Spencer



granite house

31 Stockwell Street, Glasgow

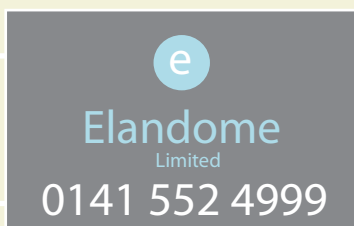
Terms:

The accommodation at Granite House is available on the basis of new Full Repairing and Insuring Leases for an agreed term.

VAT:

All figures quoted exclusive of VAT

For further information, please contact:



www.granitehouseglasgow.com

PROPERTY MISDESCRIPTIONS ACT 1991

The information contained within these particulars has been checked and unless otherwise stated, it is understood to be materially correct at the date of publication. After these details have been printed, circumstances may change outwith our control. When we are advised of any change we will inform all enquirers at the earliest opportunity

PUBLICATION DATE: June 2010



Indicative office finish

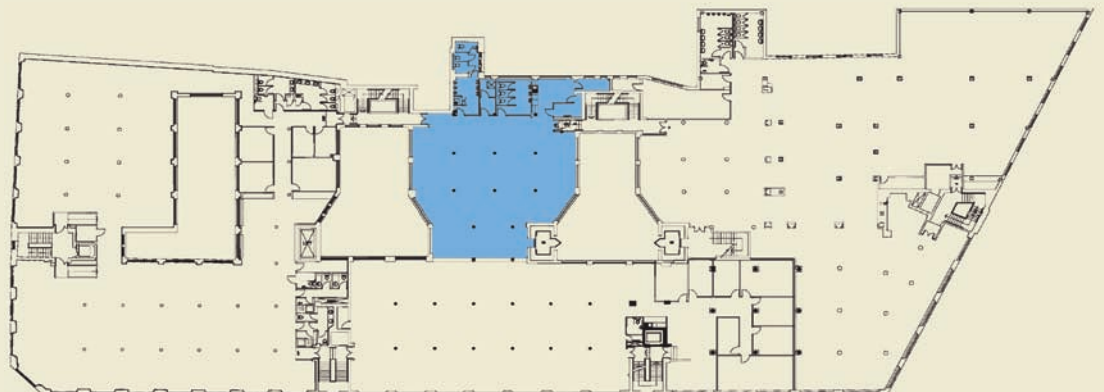
Description:

The available accommodation is located on the first floor of the building and is accessed via the Granite House entrance on Stockwell Street. Lift and stair access is available.

The accommodation provides a modern open plan office suite finished to a high standard.

Specification Includes:

- Raised access floors
- Suspended ceilings incorporating recessed light fittings
- New carpets throughout
- New double glazed window units
- Gas fired central heating system
- Tea preparation facility
- Private Male, Female and Disabled toilet facilities



Accommodation :

The suite extends to a Net Internal floor area of approximately 322 sq m (3,466 sq ft).